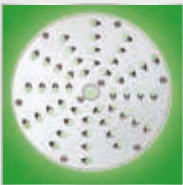
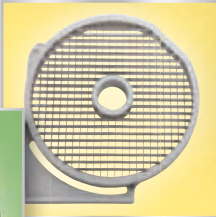
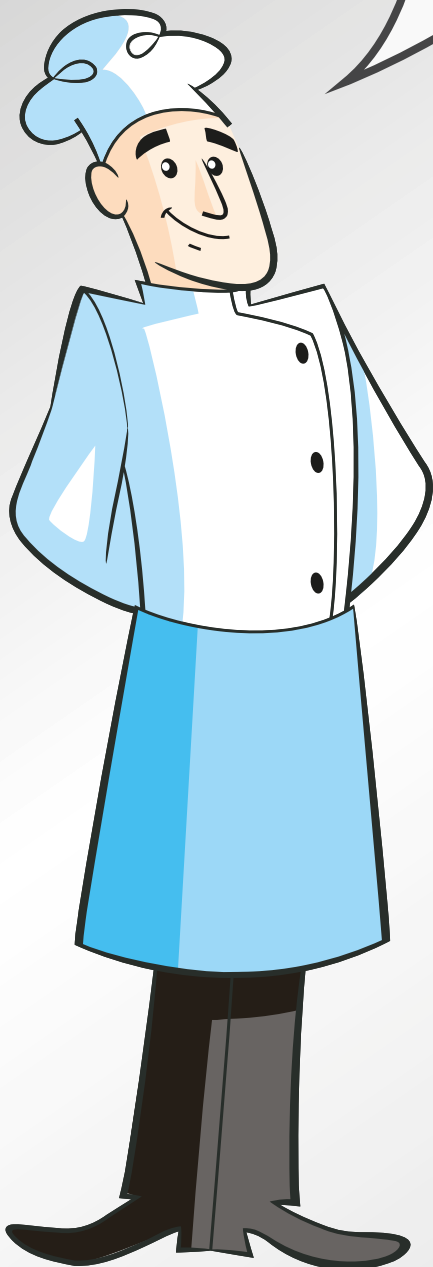




Cutting guide stainless steel discs

More than 40 discs
for more than 80
different cuts





Shredders

2 mm to 10 mm



AS2XX
650166

2 mm



AS3XX
650167

3 mm



AS4XX
650077

4 mm



AS6XX
650078

6 mm



AS8XX
650079

8 mm



AS10XX
650080

10 mm



AS2X8X
650158

8 mm



AS2X10X
650159

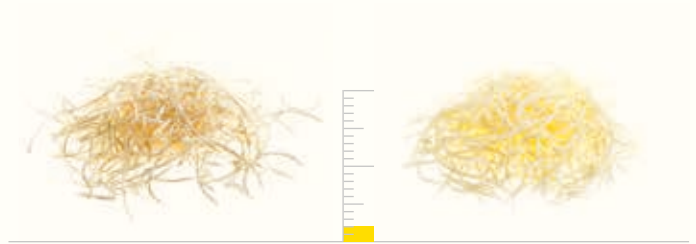
10 mm





Graters

2 mm to 9 mm



J2X
653773

2 mm



J3X
653774

3 mm



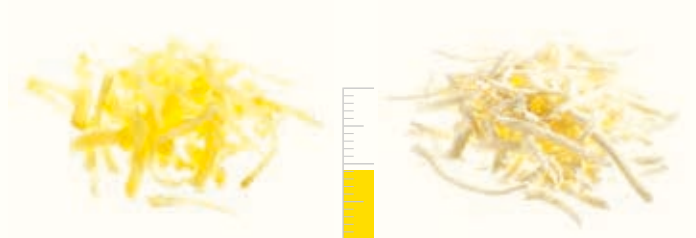
J4X
653775

4 mm



J7X
653776

7 mm



J9X
653777

9 mm



KX
653778

for breadcrumbs/potatoes



PX
653779

for parmesan/chocolate



Slicers

0.6 mm to 13 mm



C06SX
650081

0.6 mm



C1SX
650082

1 mm



C2SX
650083

2 mm



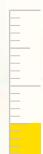
C3SX
650084

3 mm



C4SX
650085

4 mm



C5SX
650086

5 mm



C6SX
650087

6 mm



C8SX
650088

8 mm



C10SX
650160

10 mm



C12SX
650161

12 mm



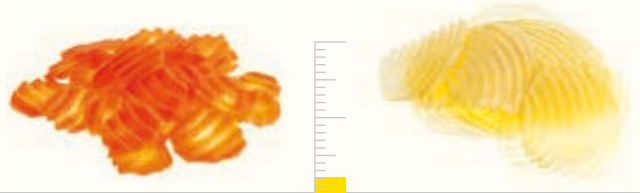
C13SX
650165

13 mm



Wavy slicers

2 mm to 10 mm



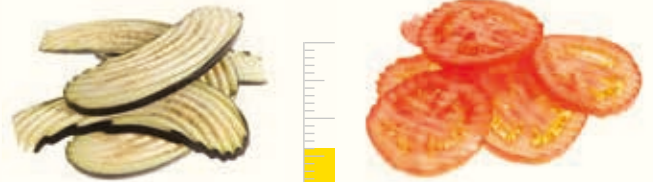
C2WX
650089

2 mm



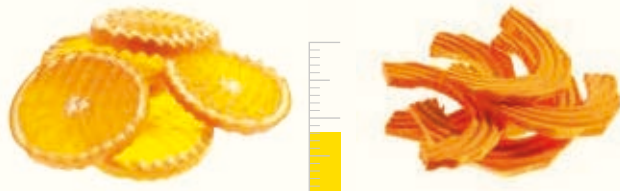
C3WX
650090

3 mm



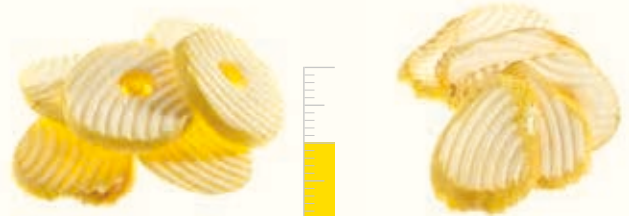
C6WX
650091

6 mm



C8WX
650162

8 mm



C10WX
650164

10 mm





Dicing grids

5x5 mm to 20x20 mm

to be combined with **slicers** (C) and **wavy slicers** (CW)



C5SX+MT05T
650086+653566

5x5x5 mm



C8SX+MT08T
650088+653567

8x8x8 mm



C10SX+MT10T
650160+653568

10x10x10 mm



C12SX+MT12T
650161+653569

12x12x12 mm



C10WX+MT20T 10x20x20 mm
650164+653570



C13SX+MT20T
650165+653570



13x20x20 mm



C2WX+MT20T 2x20x20 mm
650089+653570



C6WX+MT20T 6x20x20 mm
650091+653570



C3SX+MT12T 3x12x12 mm
650084+653569



C4SX+MT20T 4x20x20 mm
650085+653570



C3WX+MT12T 3x12x12 mm
650090+653569



C6WX+MT10T 6x10x10 mm
650091+653568



Grids for chips

6,8 and 10 mm

to be combined with **slicers (C)** and **wavy slicers (CW)**



C6SX+FT06 6x6 mm
650087+653571



C8SX+FT08 8x8 mm
650088+653572



C10WX+FT10 10x10 mm
650164+653573



C2SX+FT10 2x10 mm
650083+653573



C3WX+FT10 3x10 mm
650090+653573

