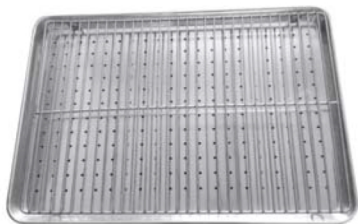


at off-peak hours).

- CE



HC15KD

## Chip Dump

### Three-in-one combo cabinet

Model	Electrical	Dimension (mm)
SHCD15	220 V, 1 ph, 4.9 kW	1500(W) x 570(D) x 940(H)
SHCD21	380 V, 3 ph, 8.2 kW	2100(W) x 600(D) x 940(H)

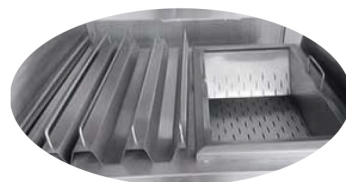
This cabinet is a chip dump, holder for hamburger and fried chicken- all in one. It is particularly useful for restaurants either with space constraint or a tight budget to buy dedicated holding cabinet for their different food. The combo cabinet holds fried chicken, hamburger, French fries, hot dog or pizza.

#### Features:

- Maximum holding temperature at 80°C to prevent the reproduction of germs and diseases.
- Independent thermostatic control for upper and lower tiers.
- Swing doors in the front.
- Slider partitions for displaying hamburgers and pizza.



SHCD15



CE