



Ovens

ADVANCE PLUS ovens

ADVANCE PLUS OVEN, APE-201

19011025

DIMENSIONS

		<u>Article</u>	<u>Packed</u>
Length	mm	929,00	1.000,00
Depth	mm	964,00	1.100,00
Height	mm	1.841,00	2.000,00
Weigth	Kg	333,00	366,00
Volumen	m3	1,65	2,20

ELECTRICITY

<u>Electric power</u>	KW		
230V - I+N			
230V - III		3x35+T - 125 A	
400V - III+N		4x16+T - 80 A	

PLUMBING - WATER

Water consumption (lit/h)		40,00
Pressure (Kg/cm2)		2 - 4

GAS

Not used

STEAM

Not used

AIR

Not used

LEVEL SOUND

(dB) **62,00**

ADVANCE PLUS OVEN, APE-201

Innovative technology in the kitchen :

- Professional quality
- Precision, excellence and perfect results
- Save time and money

Capacity for 20 1/1-GN trays.

"Touch control" screen.

4 cooking methods: Steam, Adjustable Steam (Humidity control during cooking), Regeneration and Convection (up to 300°C).

Preheating option.

Fagor Easy cooking mode.

Fagor Cooking, range of cooking programmes.

Fagor Multi-Tray System, control cooking by tray.

Delayed programming for: Cooking, Low-temperature cooking and Washing.

Memory function: records the different cooking methods used.

3 Speeds - 2 power ranges.

Cold-Down chamber cooling system.

"Auto-reverse" system to reverse fan rotation.

5 wash programmes.

Multisensor temperature probe.

PC management software: History, recipes. HACCP, manuals...

HACCP cooking data recording system.

Steam generator equipped with limescale detector.

Steam generator automatically empties every 24 hours of cooking.

Semi-automatic limescale removal system.

Error detection system.

"Repair service" mode system.

IPX-5 protection.

Retractable shower.

Built-in trolley and structure for trays.

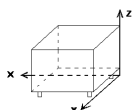
Power: 38.4 kW.

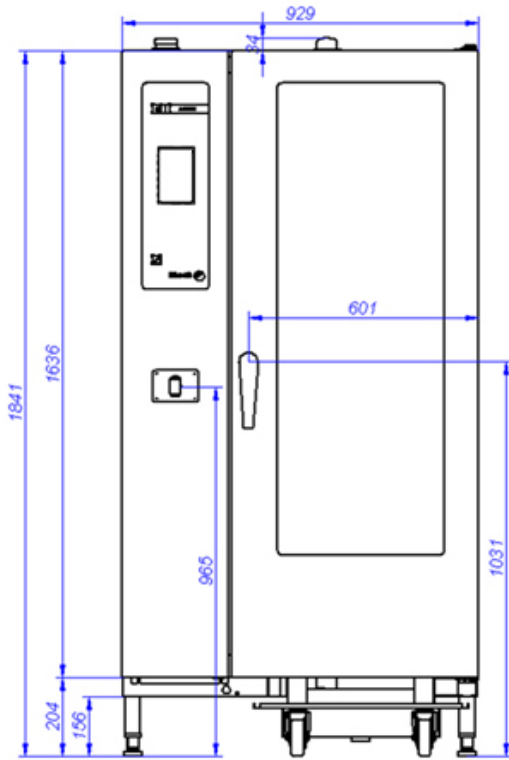
Dimensions: 929 x 964 x 1.841 mm.

Accessories in option:

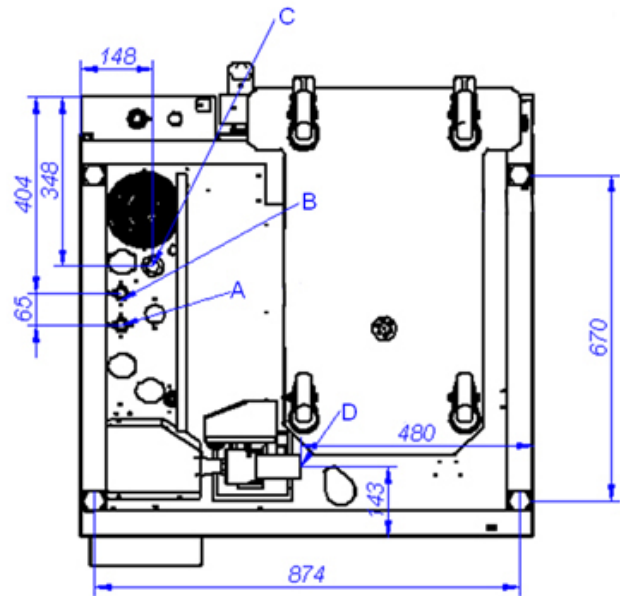
- Loading trolley for dishes CEP-201
- Thermal cover LT-201
- GN trays, grids, moulds...

<u>Connections points</u>	<u>X</u>	<u>Y</u>	<u>Z</u>	<u>Diameter</u>	<u>Information</u>
ELECTRICITY	781	616	110		
COLD WATER	850	495	110	3/4"	
DRAIN	480	203	110	30x25	
SOFT COLD WATER	850	560	110	3/4"	

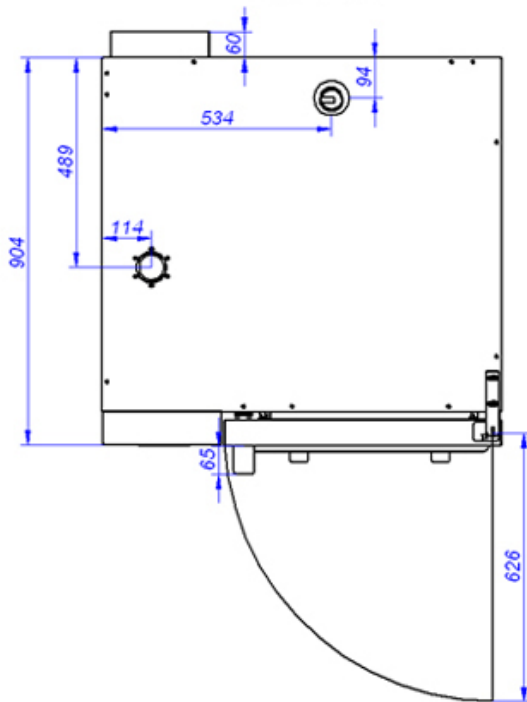




APE-201



VISTA DE LA BASE DESDE LA PARTE INFERIOR
VIEW FROM THE BOTTOM OF THE MACHINE



A: Entrada de agua blanda
B: Entrada de agua dura
D: Desagüe

C: Alimentación eléctrica

A: Soft water inlet
B: Water inlet
D: Drain

C: Electrical connection